

Úvod do fúze (na tokamaku (GOLEM))

Vojtěch Svoboda
on behalf of the GOLEM tokamak team

October 31, 2023

<http://golem.fjfi.cvut.cz/JACH2>

Úvod do fúze (na tokamaku (GOLEM))

Vojtěch Svoboda
on behalf of the GOLEM tokamak team

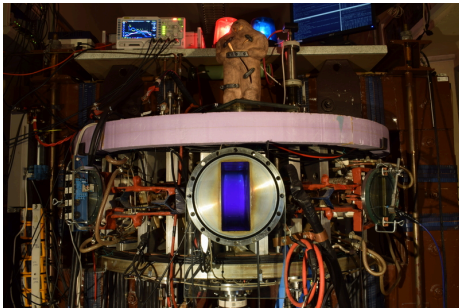
October 31, 2023

Table of Contents

- 1 Introduction
- 2 The Tokamak (GOLEM)
- 3 The Tokamak GOLEM (remote) operation
- 4 Conclusion
- 5 Appendix

The GOLEM tokamak basic characteristics

The grandfather of all tokamaks (ITER newslines 06/18)



- Vessel major radius: $R_0 = 0.4$ m
- Vessel minor radius: $r_0 = 0.1$ m
- Maximum plasma current:
 $I_p^{\max} < 8$ kA
- Maximum toroidal magnetic field: $B_t^{\max} < 0.5$ T
- Typical electron density:
 $\langle n_e \rangle \in (0.2, 3) \cdot 10^{19} \text{ m}^{-3}$
- Maximum electron temperature:
 $T_e^{\max} < 80$ eV
- Maximum discharge duration:
 $\tau_p^{\max} < 25$ ms

Tokamak GOLEM @ Wikipedia ..


File Edit View Go Bookmarks Tools Settings Window Help

W https://en.wikipedia.org/wiki/Tokamak

home Kalendarj Produkce Forecast Slovník Ráno

Not logged in [Talk](#) [Contributions](#) [Create account](#) [Log in](#)

Article [Talk](#) [Read](#) [Edit](#) [View history](#)

 **WIKIPEDIA**
The Free Encyclopedia

[Main page](#)
[Contents](#)
[Featured content](#)
[Current events](#)

Tokamak

From Wikipedia, the free encyclopedia

This article is about the fusion reaction device. For other uses, see [Tokamak \(disambiguation\)](#).

A **tokamak** (Russian: **токамак**) is a device that uses a powerful magnetic field to confine plasma in the shape of a torus. Achieving a stable plasma equilibrium requires magnetic field lines that wrap around the torus in a helical shape. Such a helical field can be generated by adding a toroidal field


it decays into a proton and electron with the emission of energy. When the time comes to actually try to make electricity from a tokamak-based reactor, some of the neutrons produced in the fusion process would be absorbed by a liquid metal blanket and their kinetic energy would be used in heat-transfer processes to ultimately turn a generator.

Experimental tokamaks [[edit](#)]


Currently in operation [[edit](#)]

(in chronological order of start of operations)

- 1960s: TM1-MH (since 1977 Castor; since 2007 Golem^[122]) in Prague, Czech Republic. In operation in Kurchatov Institute since early 1960s but renamed to Castor in 1977 and moved to IPP CAS,^[131] Prague; in 2007 moved to FNSPE, Czech Technical University in Prague and renamed to Golem.^[14]
- 1975: T-10, in Kurchatov Institute, Moscow, Russia (formerly Soviet Union); 2 MW
- 1983: Joint European Torus (JET), in Culham, United Kingdom
- 1985: JT-60, in Naka, Ibaraki Prefecture, Japan; (Currently undergoing upgrade to Super, Advanced model)
- 1987: STOR-M, University of Saskatchewan; Canada; first demonstration of alternating current in a tokamak.
- 1988: Tore Supra,^[15] at the CEA, Cadarache, France
- 1989: Aditya, at Institute for Plasma Research (IPR) in Gujarat, India
- 1980s: DIII-D,^[16] in San Diego, USA; operated by General Atomics since the late 1980s
- 1989: COMPASS,^[13] in Prague, Czech Republic; in operation since 2008, previously operated from 1989 to 1999 in Culham, United Kingdom
- 1990: FTU, in Frascati, Italy
- 1991: Tokamak ISTTOK,^[17] at the Instituto de Plasmas e Fusão Nuclear, Lisbon, Portugal;
- 1991: ASDEX Upgrade, in Garching, Germany



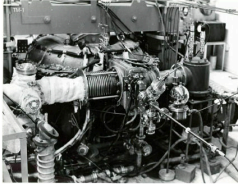
Alcator C-Mod



ida, the free encyclo... W Tokamak - Wikipedia, the free encyclo... [svoboda] buon@fi.cvut.cz - Kosside [Krusader] Inbox - svoboda@fi.cvut.cz - Mail

The GOLEM tokamak for education - historical background

Kurchatov Institute near Moscow,
Soviet Union
1960: **TM1-MH**



1974



Culham Centre for Fusion Energy
Great Britain
1989: **COMPASS-D**



2006



Institute of Plasma Physics
Czech republic
CASTOR **COMPASS**



2008



Czech Technical University Prague
Czech republic
GOLEM



GOLEM

... somewhere, in the ancient cellars of Prague,

there is hidden indeed "infernal" power. Yet it is the very power of celestial stars themselves. Calmly dormant, awaiting mankind to discover the magic key, to use this power for their benefit. . .

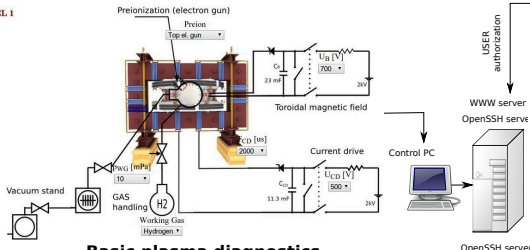


At the end of the 16th century, in the times when the Czech lands were ruled by Emperor Rudolf II, in Prague, there were Rabbi Judah Loew, well known alchemist, thinker, scholar, writer and inventor of the legendary GOLEM - a clay creature inspired with the Universe power that pursued his master's command after being brought to life with a shem, . Golem is not perceived as a symbol of evil, but rather as a symbol of power which might be useful but is very challenging to handle. To learn more of the Golem legend, see e.g. [1].

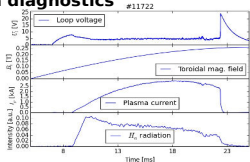
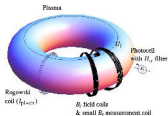
The global schematic overview of the GOLEM experiment

LEVEL 1

Tokamak technology setup



Basic plasma diagnostics



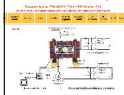
internet



**Virtual control room
(remote participation)**

WWW control interface

HTML & PHP scripts



SSH control interface

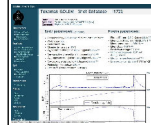
WINDOWS via putty



LINUX via ssh
or ssh+X tunnel
(advanced mode)

Data presentation

HTML (www pages)



Data handling

- *wget
- *gnuplot
- *idl
- *mathematica
- *matlab
- *etc...

WWW server
OpenSSH server

OpenSSH server

Control PC



The GOLEM tokamak mission

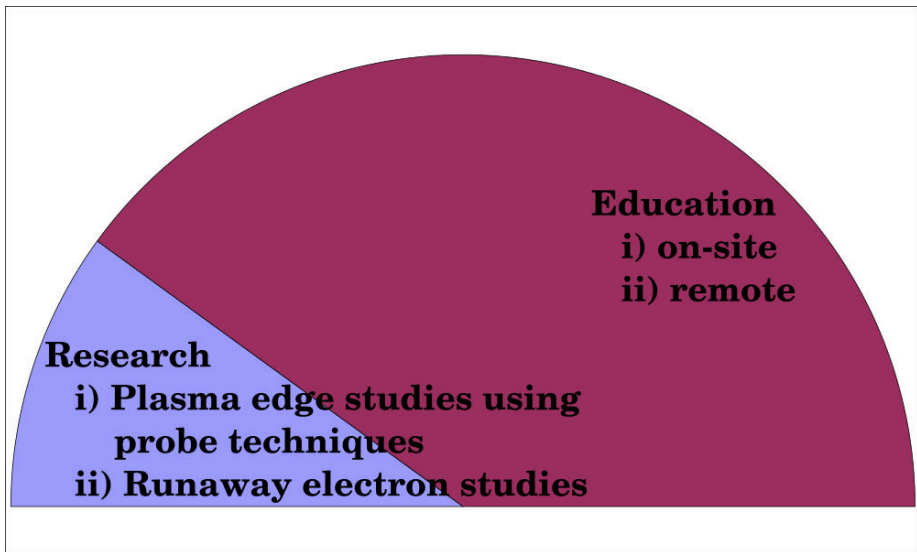
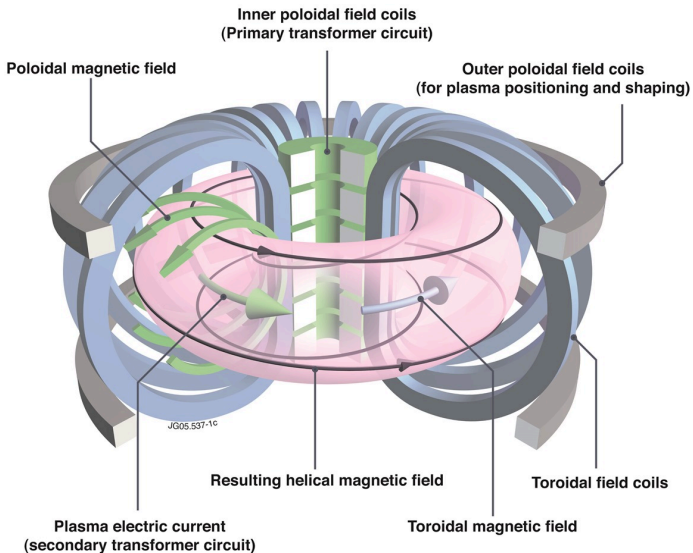


Table of Contents

- 1 Introduction
- 2 The Tokamak (GOLEM)**
- 3 The Tokamak GOLEM (remote) operation
- 4 Conclusion
- 5 Appendix

Tokamak magnetic confinement concept



Tokamak (GOLEM) basic concept to confine and heat the plasma

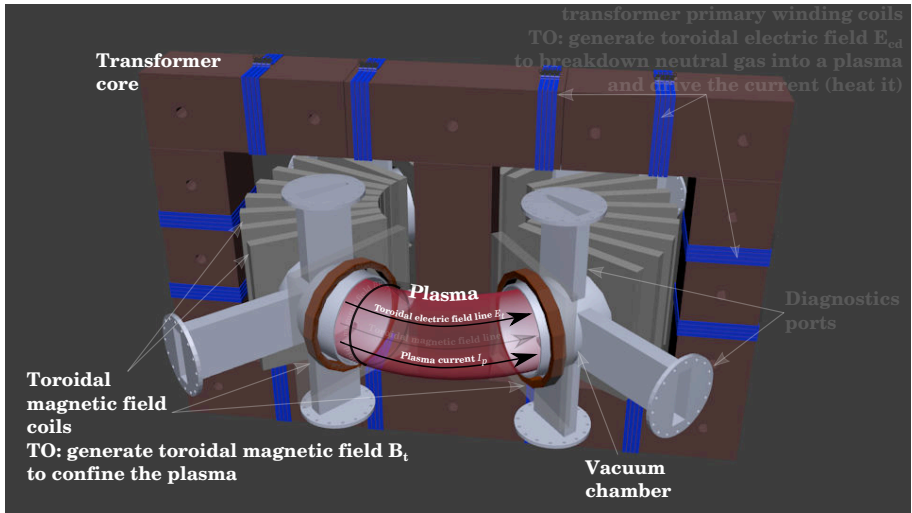


Table of Contents

1 Introduction

2 The Tokamak (GOLEM)

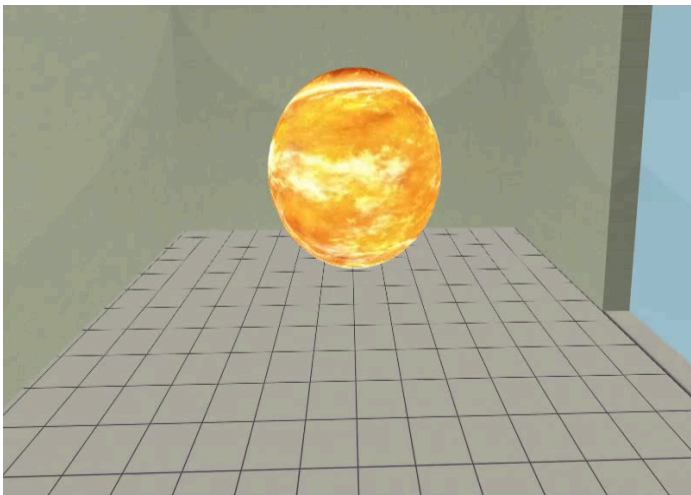
- The GOLEM tokamak concept
- The scenario to make the (GOLEM) tokamak discharge
- The scenario to discharge virtually
- The GOLEM tokamak basic diagnostics
- The GOLEM tokamak - guide tour

3 The Tokamak GOLEM (remote) operation

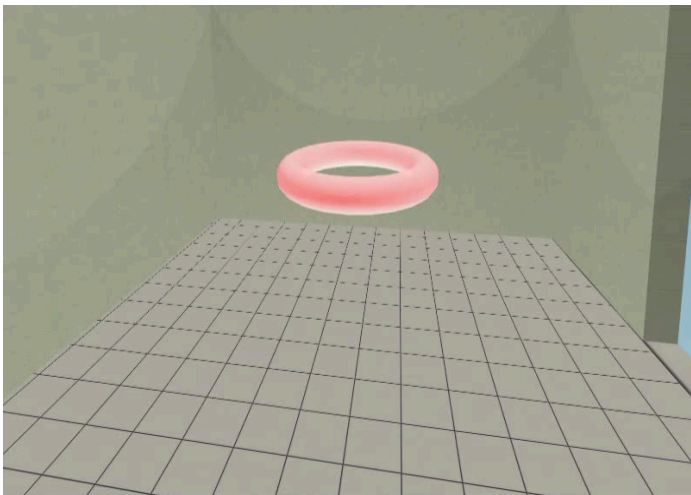
4 Conclusion

5 Appendix

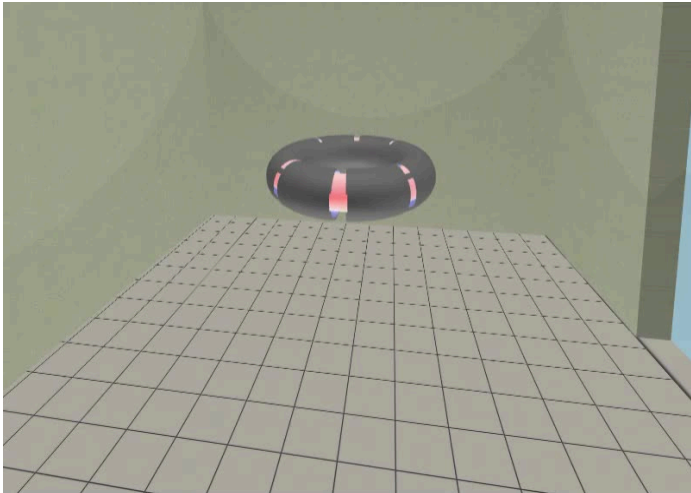
Our goal: the technology to create a μ Sun on the Earth



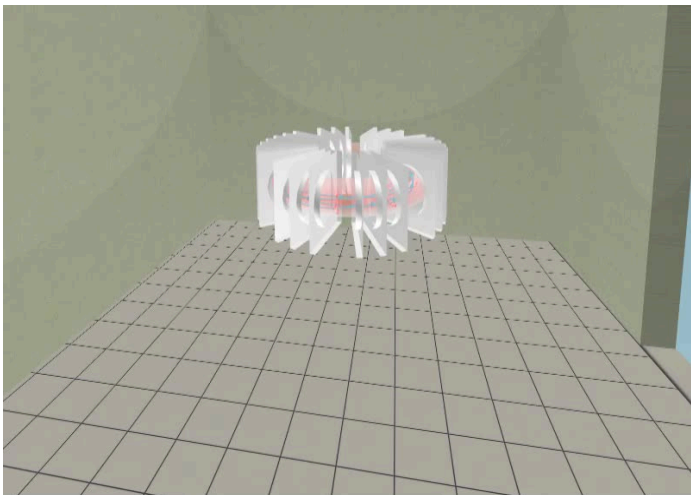
Magnetic confinement requires toroidal geometry



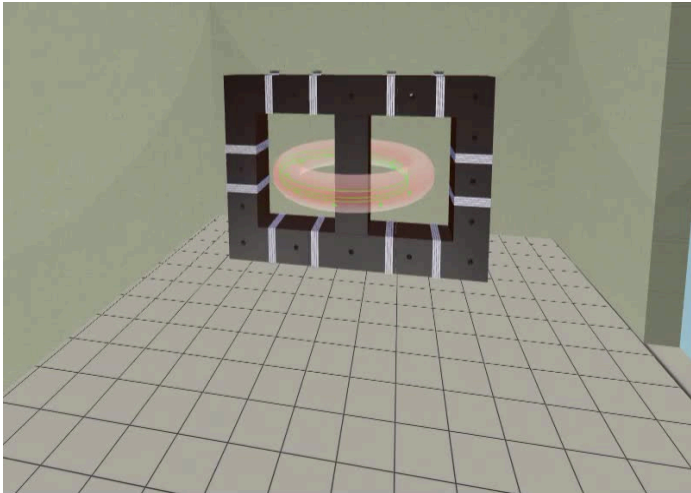
A chamber contains the thermonuclear reaction



Toroidal magnetic field coils confine the plasma



A transformer action creates and heats the plasma



The final technology altogether

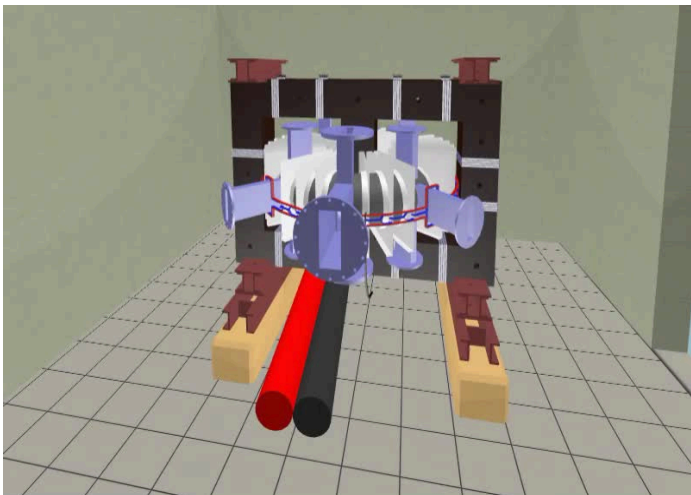


Table of Contents

1 Introduction

2 The Tokamak (GOLEM)

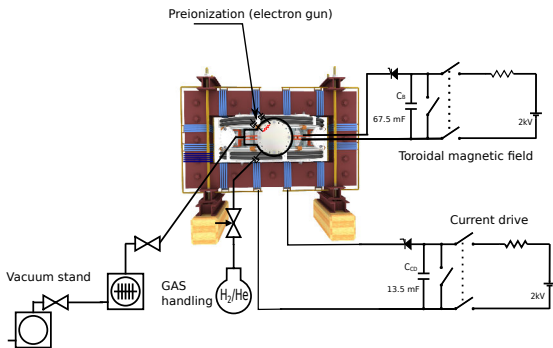
- The GOLEM tokamak concept
- The scenario to make the (GOLEM) tokamak discharge
- The scenario to discharge virtually
- The GOLEM tokamak basic diagnostics
- The GOLEM tokamak - guide tour

3 The Tokamak GOLEM (remote) operation

4 Conclusion

5 Appendix

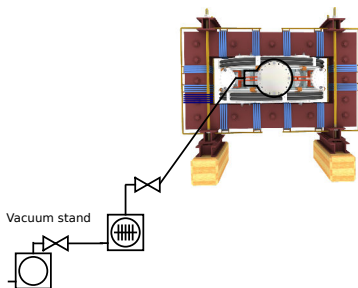
Plasma in Tokamak (GOLEM) - the least to do



To do:

- session start phase:
 - Evacuate the chamber
- pre-discharge phase
 - Charge the capacitors
 - Fill in the working gas
 - Preionization
- discharge phase
 - Toroidal magnetic field to confine plasma
 - Toroidal electric field to breakdown neutral gas into plasma
 - Toroidal electric field to heat the plasma
 - Plasma positioning
 - Diagnostics
- post-discharge phase

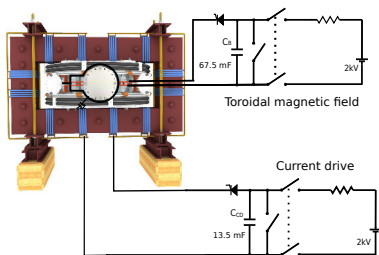
Plasma in Tokamak (GOLEM) - the least to do



To do:

- session start phase:
 - **Evacuate the chamber**
- pre-discharge phase
 - Charge the capacitors
 - Fill in the working gas
 - Preionization
- discharge phase
 - Toroidal magnetic field to confine plasma
 - Toroidal electric field to breakdown neutral gas into plasma
 - Toroidal electric field to heat the plasma
 - Plasma positioning
 - Diagnostics
- post-discharge phase

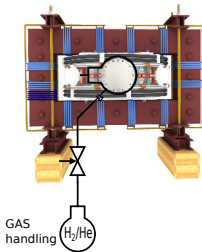
Plasma in Tokamak (GOLEM) - the least to do



To do:

- session start phase:
 - Evacuate the chamber
- pre-discharge phase
 - **Charge the capacitors**
 - Fill in the working gas
 - Preionization
- discharge phase
 - Toroidal magnetic field to confine plasma
 - Toroidal electric field to breakdown neutral gas into plasma
 - Toroidal electric field to heat the plasma
 - Plasma positioning
 - Diagnostics
- post-discharge phase

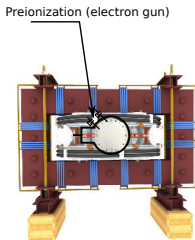
Plasma in Tokamak (GOLEM) - the least to do



To do:

- session start phase:
 - Evacuate the chamber
- pre-discharge phase
 - Charge the capacitors
 - **Fill in the working gas**
 - Preionization
- discharge phase
 - Toroidal magnetic field to confine plasma
 - Toroidal electric field to breakdown neutral gas into plasma
 - Toroidal electric field to heat the plasma
 - Plasma positioning
 - Diagnostics
- post-discharge phase

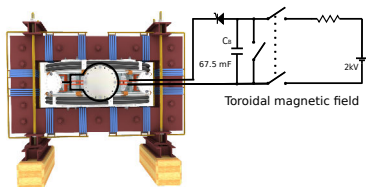
Plasma in Tokamak (GOLEM) - the least to do



To do:

- session start phase:
 - Evacuate the chamber
- pre-discharge phase
 - Charge the capacitors
 - Fill in the working gas
 - **Preionization**
- discharge phase
 - Toroidal magnetic field to confine plasma
 - Toroidal electric field to breakdown neutral gas into plasma
 - Toroidal electric field to heat the plasma
 - Plasma positioning
 - Diagnostics
- post-discharge phase

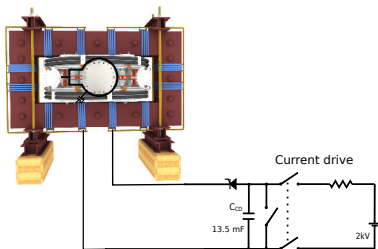
Plasma in Tokamak (GOLEM) - the least to do



To do:

- session start phase:
 - Evacuate the chamber
- pre-discharge phase
 - Charge the capacitors
 - Fill in the working gas
 - Preionization
- discharge phase
 - **Toroidal magnetic field to confine plasma**
 - Toroidal electric field to breakdown neutral gas into plasma
 - Toroidal electric field to heat the plasma
 - Plasma positioning
 - Diagnostics
- post-discharge phase

Plasma in Tokamak (GOLEM) - the least to do



To do:

- session start phase:
 - Evacuate the chamber
- pre-discharge phase
 - Charge the capacitors
 - Fill in the working gas
 - Preionization
- discharge phase
 - Toroidal magnetic field to confine plasma
 - **Toroidal electric field to breakdown neutral gas into plasma**
 - **Toroidal electric field to heat the plasma**
 - Plasma positioning
 - Diagnostics
- post-discharge phase

Tokamak GOLEM - schematic experimental setup

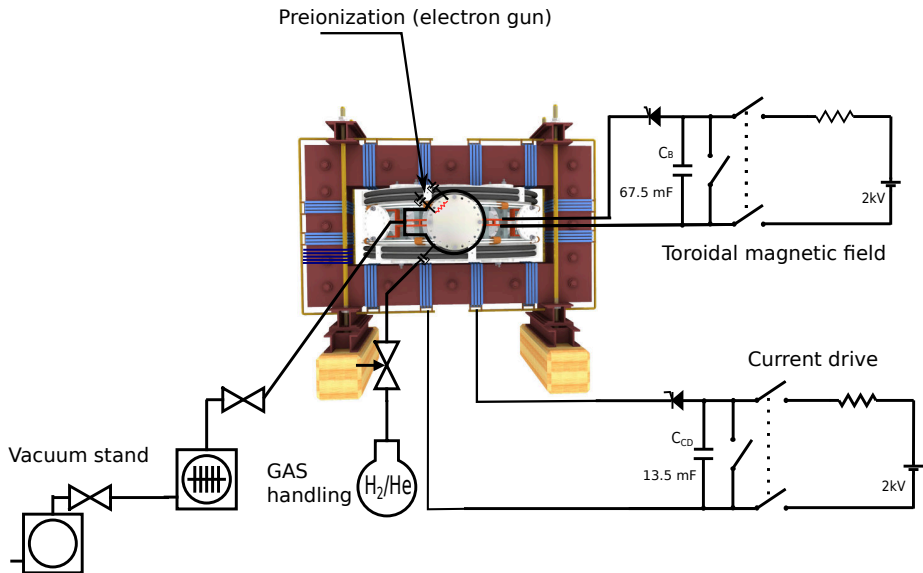


Table of Contents

1 Introduction

2 The Tokamak (GOLEM)

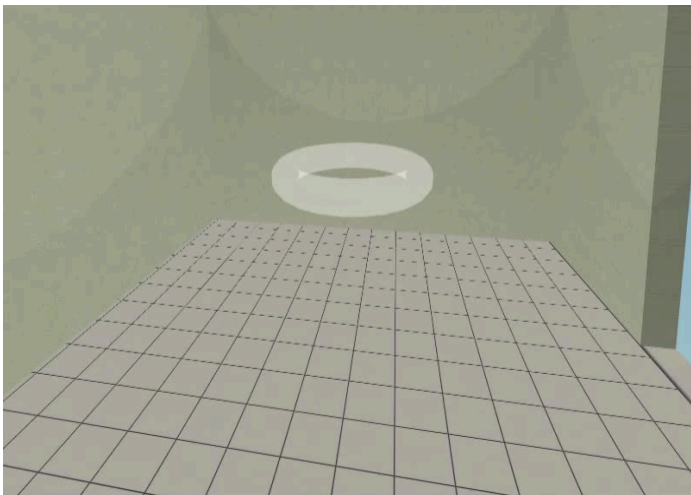
- The GOLEM tokamak concept
- The scenario to make the (GOLEM) tokamak discharge
- The scenario to discharge virtually
- The GOLEM tokamak basic diagnostics
- The GOLEM tokamak - guide tour

3 The Tokamak GOLEM (remote) operation

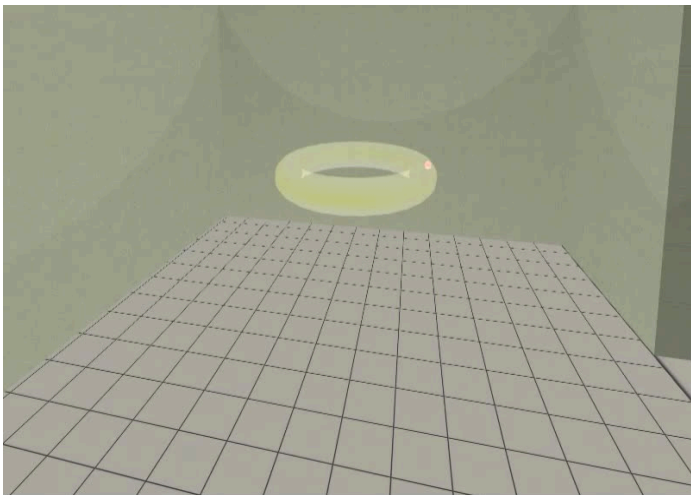
4 Conclusion

5 Appendix

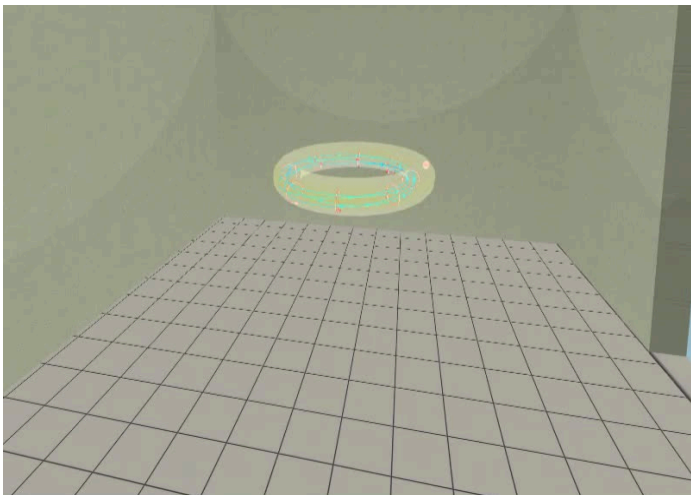
Introduce the working gas (Hydrogen x Helium)



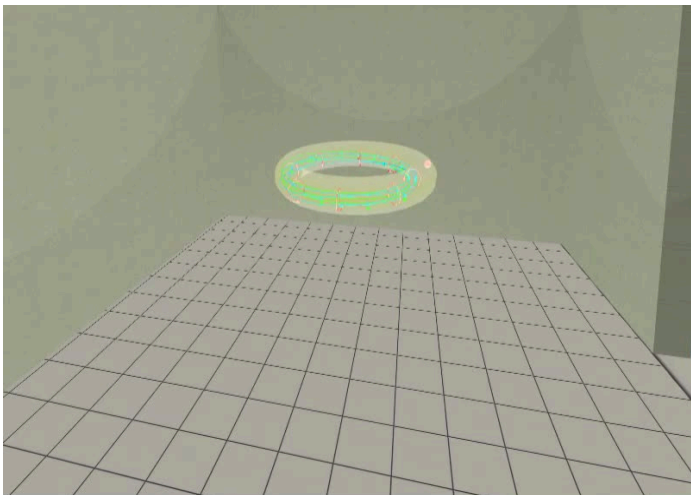
Switch on the preionization



Introduce the magnetic field



Introduce the electric field



Plasma ..

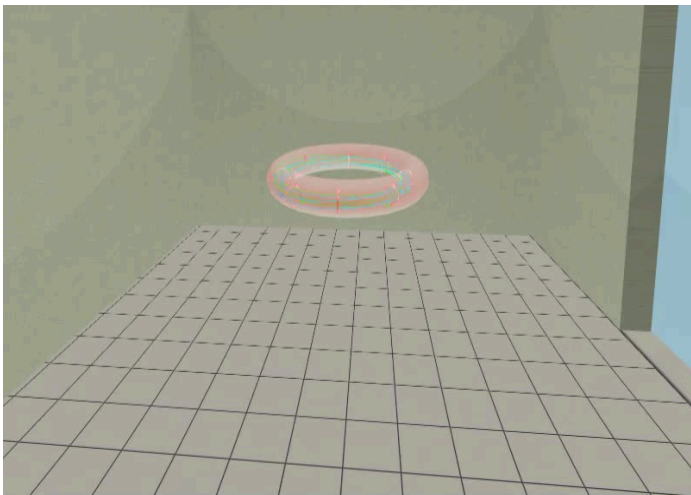


Table of Contents

1 Introduction

2 The Tokamak (GOLEM)

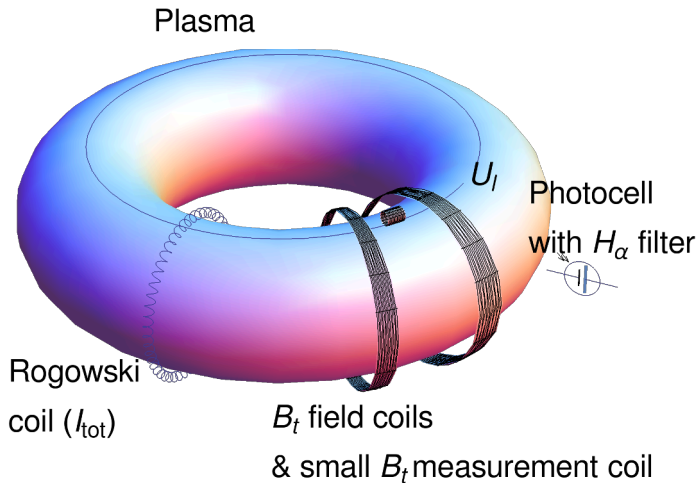
- The GOLEM tokamak concept
- The scenario to make the (GOLEM) tokamak discharge
- The scenario to discharge virtually
- The GOLEM tokamak basic diagnostics
- The GOLEM tokamak - guide tour

3 The Tokamak GOLEM (remote) operation

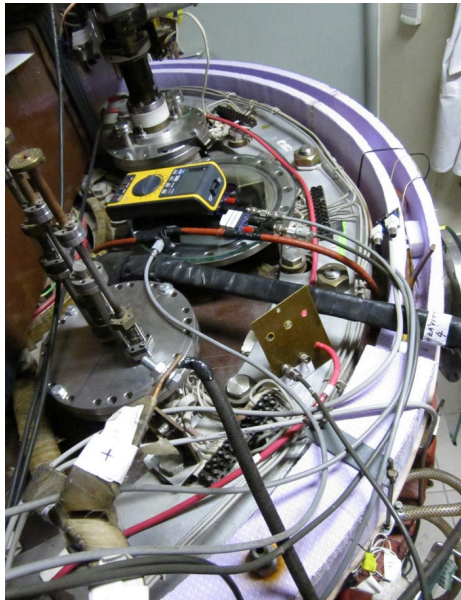
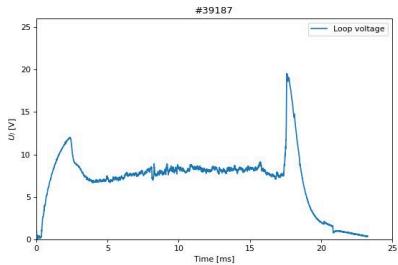
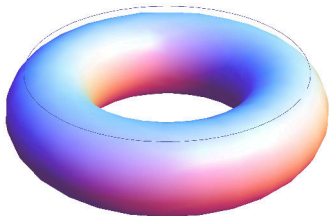
4 Conclusion

5 Appendix

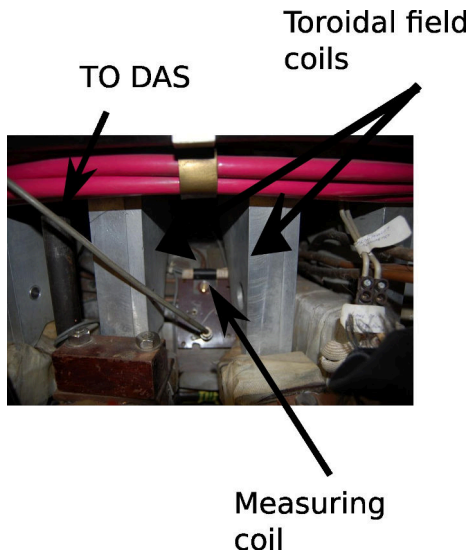
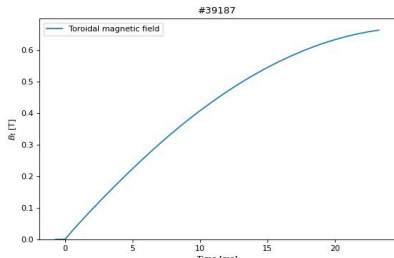
The GOLEM tokamak - basic diagnostics



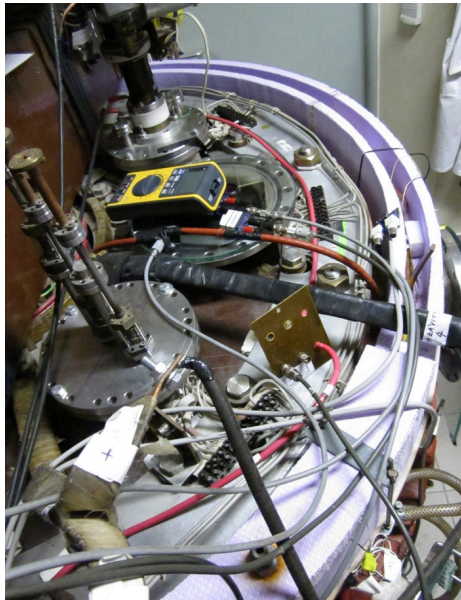
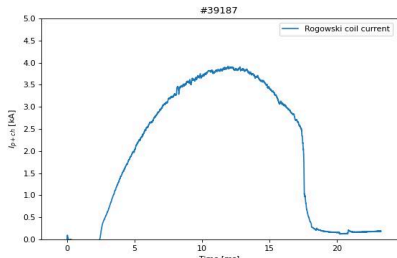
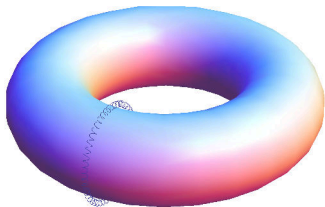
Loop voltage U_l @ the GOLEM tokamak



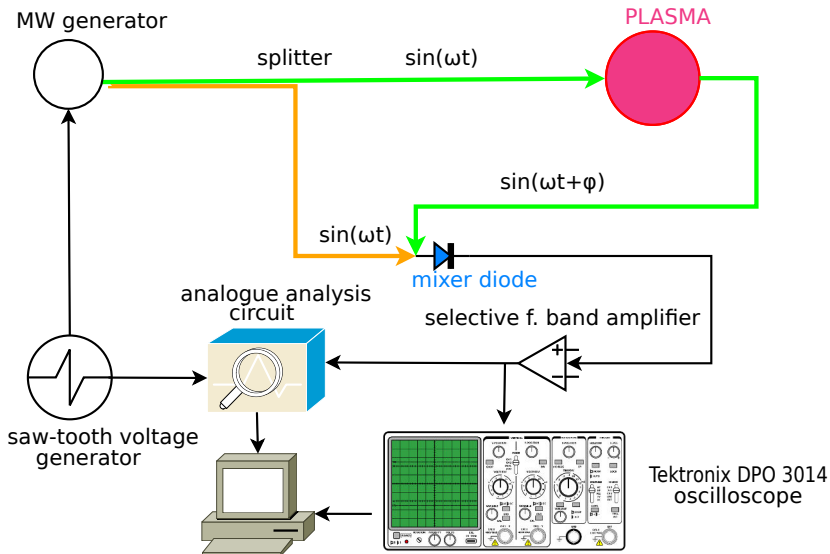
Toroidal magnetic field B_t @ the tokamak GOLEM



Total current I_{ch+p}



Electron density n_e interferometry measurement scheme



"Typical", well executed discharge @ GOLEM

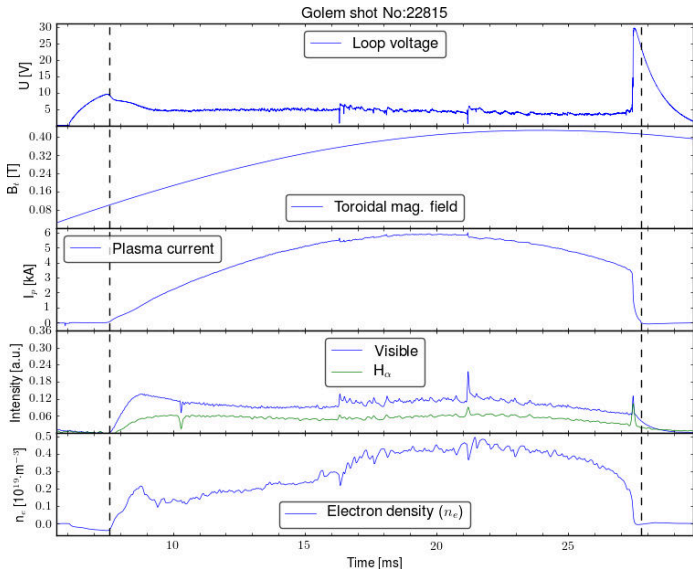


Table of Contents

1 Introduction

2 The Tokamak (GOLEM)

- The GOLEM tokamak concept
- The scenario to make the (GOLEM) tokamak discharge
- The scenario to discharge virtually
- The GOLEM tokamak basic diagnostics
- The GOLEM tokamak - guide tour

3 The Tokamak GOLEM (remote) operation

4 Conclusion

5 Appendix

Infrastructure room (below tokamak) 10/16



Infrastructure room (below tokamak) 10/16

Current drive CD field
and toroidal magnetic Bt field
circuits

To the tokamak
GOLEM

Rotary
pump

Vacuum
control

Current drive CD
capacitors

Plasma
stabilization

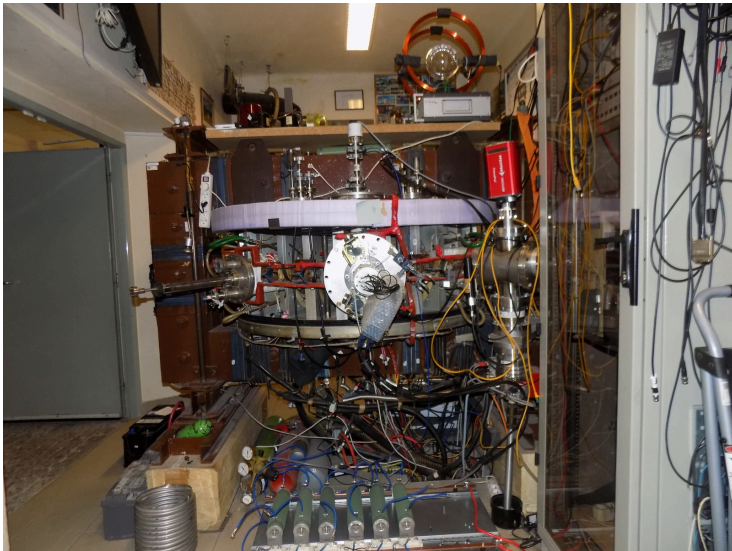
power
supply
2kV

Toroidal
magnetic field B
capacitors

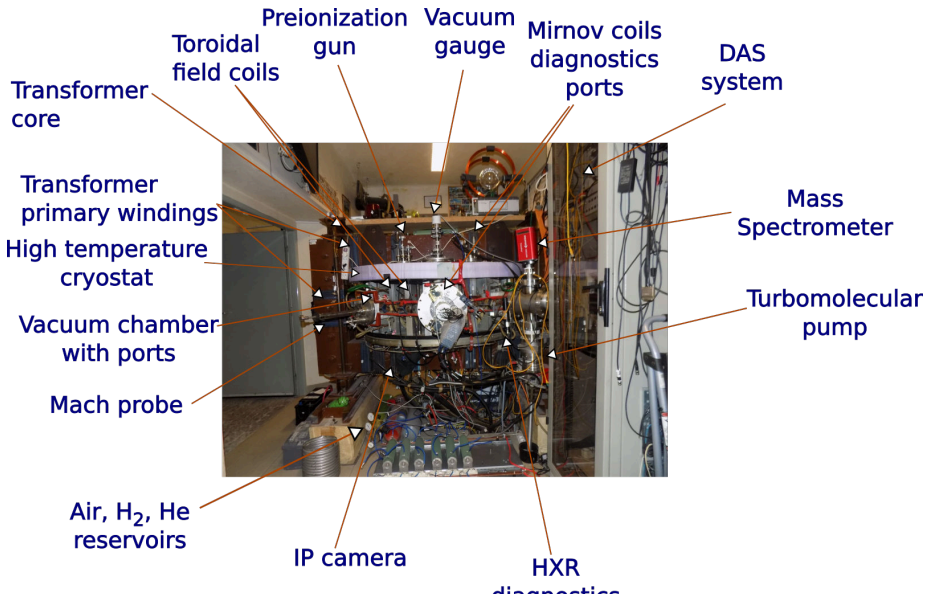
fire
protection
system



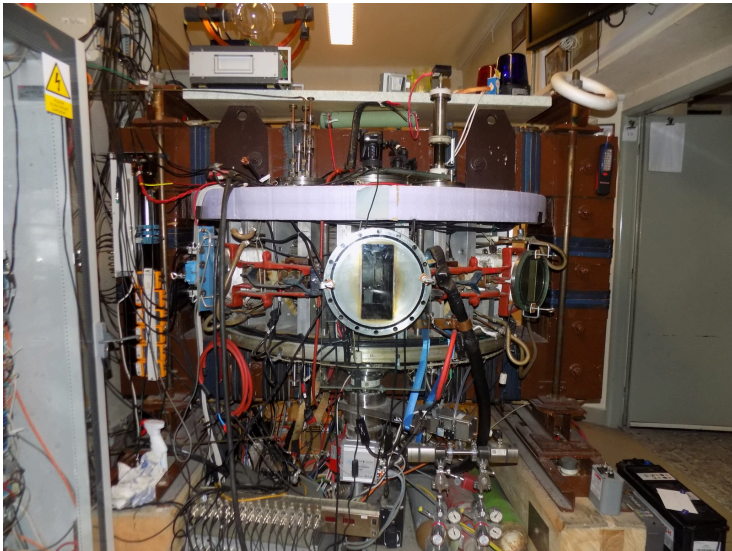
Tokamak room (North) 10/16



Tokamak room (North) 10/16



Tokamak room (South) 10/16



Tokamak room (South) 10/16

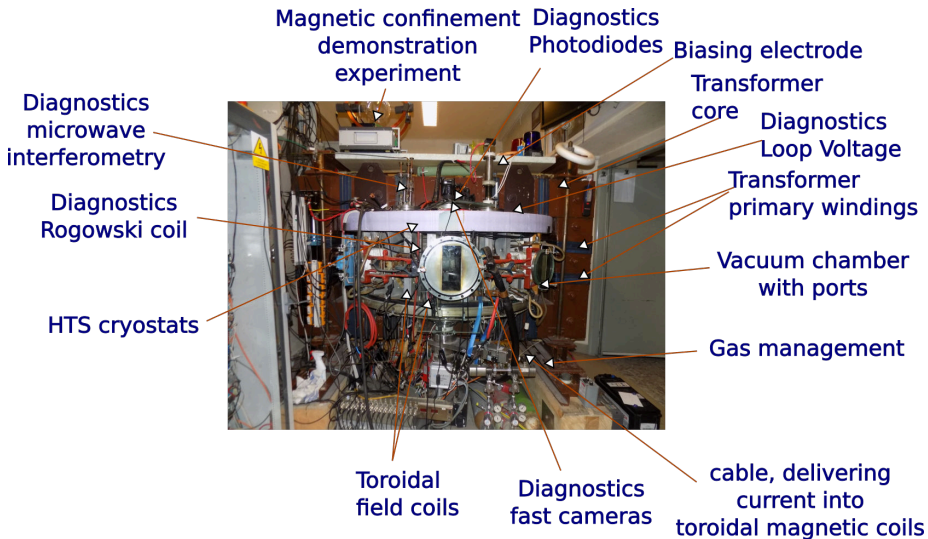


Table of Contents

- 1 Introduction
- 2 The Tokamak (GOLEM)
- 3 The Tokamak GOLEM (remote) operation**
- 4 Conclusion
- 5 Appendix

Table of Contents

- 1 Introduction
- 2 The Tokamak (GOLEM)
- 3 The Tokamak GOLEM (remote) operation**
 - Control room
 - Data handling @ the Tokamak GOLEM
- 4 Conclusion
- 5 Appendix

Control room: Introduction

GOLEM remote Introduction **Control room** Live Results

Prague Access: Level 1 Help

Introduction Working gas Preionization Magnetic field Current drive Submit

This web interface will walk you through the process of configuring a discharge in the GOLEM tokamak. All settable values are perfectly safe. Proceed through each step by setting the desired values and then clicking the [Next](#) button. You can always go to a specific step by clicking its tab.

Preionization (electron gun)

Vacuum stand

Preionization (electron gun)

Toroidal magnetic field

Current drive

GAS handling H_2/He

23 mF C_p

11.3 mF C_p

2kV

2kV

3D model rendering method: **Static image (fast)** Interactive X3DOM (slower)

[Next](#)

Control room: Working gas

GOLEM remote Introduction Control room Live Results

Introduction Working gas Preionization Magnetic field Electric field Submit

Set the pressure and type of the working gas from which the plasma is formed. Pressure must be high enough for plasma to form, but low enough for gas breakdown to occur.

Preionization (electron gun)

Vacuum stand

Toroidal magnetic field

Toroidal electric field

GAS handling

H_2/H_9

Gas type and pressure p_{gas} : 38 mPa

Hydrogen Helium

Next Set recommended value

3D model rendering method Static image (best) Interactive X3DOM (preview)

Control room: Preionization

GOLEM remote Introduction Control room Live Results

Introduction Working gas Preionization Magnetic field Electric field Submit

The neutral working gas must be first ionized in order to break down into a plasma. Using the electron gun will locally ionize the gas. Without any ionization, no plasma can form.

Preionization (electron gun)

Vacuum stand

GAS handling

Toroidal magnetic field

Toroidal electric field

67.5 mF

13.5 mF

20V

20V

ionization method

Electron gun No ionization

Next

3D model rendering method Static image (best) Interactive X3DOM (viewer)

Control room: Magnetic field B_t

GOLEM version: Introduction Control room Live Results

the Torus Politecnico, Italy Group 1 Access: Level 2 Help

Introduction Working gas Preionization **Magnetic field** Electric field Submit

Press F11 to exit full screen 3D model rendering method Static image (best) Interactive X3DOM (viewer)

Set the voltage on the capacitors to be discharged into the toroidal field coils. The higher the voltage, the larger the magnetic field confining the plasma.

Preionization (electron gun)

Vacuum stand

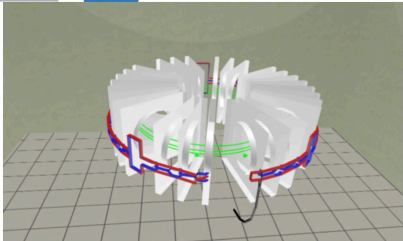
Toroidal magnetic field

Toroidal electric field

GAS handling

Capacitor voltage $U_{C_1} = 600$ V

Next Set recommended value



Control room: Current drive E_{cd}

GOLEM remote Introduction Control room Live Results

the Torneo Politecnico, Italy Group 1 Access: Level 2 Help

Introduction Working gas Preionization Magnetic field **Electric field** Submit

Set the voltage on the capacitors to be discharged into the [primary transformer winding](#). The higher the voltage, the larger the electric field creating and heating the plasma. The electric field capacitors are discharged after a configurable delay with respect to the magnetic field capacitors.

Preionization (electron gun)

Vacuum stand

Toroidal magnetic field

Toroidal electric field

GAS handling

Time delay of electric field start after the magnetic field starts t_{cd} : 0 micro seconds

Capacitor voltage U_{cd} : 400 V

Next Set recommended value

3D model rendering method Static image (best) Interactive X3DOM (preview)

Control room: ... and Submit

GOLEM remote Introduction Control room Live Results

the Torneo Politecnico, Italy Group 1 Access: Level 2 Help

Introduction Working gas Preionization Magnetic field Electric field **Submit**

Write a comment describing your discharge configuration, i.e. the scientific aim of your experiment. Or just leave a friendly message.

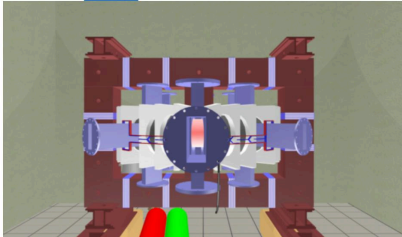
COMMENT

Click the Submit button to send your configuration into the queue. **Submit**

After submission you can watch the discharge Live or go back to the Introduction tab and start again. Or you can go to specific control tabs and reconfigure the discharge and then submit another discharge request.


[Watch the discharge Live!](#) [Go back to Introduction](#)

3D model rendering method: [Static image \(best\)](#) [Interactive X3DOM \(slower\)](#)



Shot homepage (≈ 2 minutes after discharge execution)

GOLEM # Shot #40631
autoreload



Diagnostics

BasicDiagnostics
DoubleRakeProbe
Interferometry
LimiterFlareCoils
ScribbleProbes

Other

View Showroom

Navigation

Next
Previous
Current

Go to shot
40631

GOLEM utils

Home
Plot data
Shot interval plot
Manipulators control

Database operations

Shots listing
Shots filtering

Tokamak GOLEM - Shot Database - #40631

The date of discharge execution 23-02-07 17:23:54

The session mission 1Final -> Dringent service

The session ID 40605

The discharge comment Rake probe 50mm

Discharge command

[Shot Logbook]

```

jDringent.sh --discharge --Ubt 800 --Tbt 0 --Utd 450 --Tod 500 --preionization 1 --gas H --pre
issue 15 --diagnostics.limiterflarescoils.vacuum_shot=40615F --discharge.preionization "m
in_switch=on;radial_heater=80;powsupp_accel=100" --infrastructure.position_stabilization
"main_switch=on;radial_switch=on;vertical_waveform=1000,0.8000,-20,10000,-25,12000,-
10,30000,0;vertical_switch=on;radial_waveform=2000,0.3000,0.7000,-20,9500,-25,10000,-
20,30000,2,25000,0" --ScanDefinition 40625 40629F --comment "Rake probe 50mm"
                    
```

Technological parameters

- Working Gas: $P_{discharge, before} = 2.46$ mPa; $P_{discharge, after} = 5.04$ mPa ($P_{WG}^{response} = 15$ mPa @ $\Delta P_{WG}^{response} = 4$)
- Toroidal magnetic field: $U_{B_t}^{response} = 800$ V @ $I_{B_t}^{response} = 0.0$ us
- Current drive field: $U_{Eca}^{response} = 450$ V @ $I_{Eca}^{response} = 500.0$ us

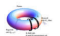
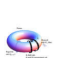

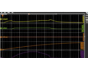
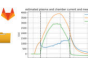

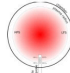

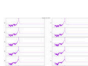

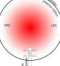

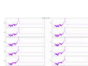





Plasma:

- Plasma: yes or no:
- Time parameters: $\Delta t_p = 10.88$ ms ($t_{rom_start} = 2.67$ ms, $t_{rom_end} = 13.54$ ms)

Plasma parameters:

- Loop voltage: $U_{loop} = 6.82$ V; $max_{T_{loop}}(I_{discharge}) U_{loop} = 16.17$ V; $U_{inductor} = 0.00$ V
- Toroidal magnetic field: $B_t = 0.24$ T; $max_{T_{loop}}(I_{discharge}) B_t = 0.36$ T
- Plasma current: $I_p = 2.28$ kA; $max_{T_{loop}}(I_{discharge}) I_p = 2.92$ kA; $t_p^{max} = 0.00$ ms

On stage diagnostics

Data flow	measurement	digitization	analysis	Analysis results
Name	Experiment setup	Data acquisition system	Raw data	
Basic Diagnostics 				
				
Double rake probe 				
				

Basic Diagnostics


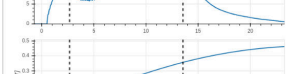
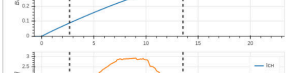




Table of Contents

- 1 Introduction
- 2 The Tokamak (GOLEM)
- 3 The Tokamak GOLEM (remote) operation**
 - Control room
 - Data handling @ the Tokamak GOLEM
- 4 Conclusion
- 5 Appendix

GOLEM basic Data Acquisition System (DAS)

- $U_I, U_{B_t}, U_{I_{p+ch}}, I_{rad}$
- $\Delta t = 1\mu s / f = 1MHz.$
- Integration time = 40 ms, thus DAS produces 6 columns x 40000 rows data file.
- Discharge is triggered at 5th milisecond after DAS to have a zero status identification.



Data file example, DAS $\Delta t = 1\mu s / f = 1MHz$ (neutral gas into plasma breakdown focused)

t	$\approx U_I$	$\approx U_{\frac{dB_T}{dt}}$	$\approx U_{\frac{d(I_{p+ch})}{dt}}$	$\approx I_{rad}$
:	:	:	:	:
:	:	:	:	:
first	\approx	7405	lines ..	:
:	:	:	:	:
:	:	:	:	:
0.007383	1.53931	0.390015	0.048828	0.001831
0.007384	1.53686	0.395508	0.067749	0.00061
0.007385	1.54053	0.391235	0.079956	0.00061
0.007386	1.53686	0.38147	0.072632	0
0.007387	1.54297	0.397949	0.059204	0.00061
0.007388	1.54053	0.384521	0.05249	0.00061
0.007389	1.54053	0.39856	0.068359	0.001221
0.00739	1.54053	0.393677	0.082397	0.001221
0.007391	1.53809	0.38208	0.072632	0.001221
0.007392	1.54297	0.400391	0.056763	0.00061
0.007393	1.54419	0.383911	0.053101	0.00061
0.007394	1.53931	0.397339	0.068359	0.001221
0.007395	1.54297	0.391846	0.084229	0.00061
0.007396	1.54541	0.394897	0.074463	0.00061
0.007397	1.54297	0.388184	0.056763	0.001221
0.007398	1.54297	0.391846	0.056763	0.00061
0.007399	1.54297	0.394287	0.06897	0.00061
:	:	:	:	:
:	:	:	:	:
next	\approx	32500	lines ..	:
:	:	:	:	:
:	:	:	:	:

Data access

All the recorded data and the settings for each discharge (shot) are available at the GOLEM website. The root directory for the files is:

```
http://golem.fjfi.cvut.cz/shots/<#ShotNo>/
```

The most recent discharge has the web page:

```
http://golem.fjfi.cvut.cz/shots/0
```

Particular data from DAS specified with <DASname> and <DASchannelidentifier> have the format:

```
http:  
//golem.fjfi.cvut.cz/<#ShotNo>/<DASname>/<DASchannelidentifier>
```

Jupyter (python)

```
import numpy as np
import matplotlib.pyplot as plt

shot_no = 39187
identifier = "U_Loop.csv"
DAS='Diagnostics/BasicDiagnostics/'
# create data cache in the 'golem_cache' folder
ds = np.DataSource('golem_cache')
#Create a path to data and download and open the file
base_url = "http://golem.fjfi.cvut.cz/shots/"
data_file = ds.open(base_url + str(shot_no)+ '/' +DAS +identifier)
#Load data from the file and plot to screen and to disk
data = np.loadtxt(data_file,delimiter=",")
plt.title('#'+str(shot_no))
plt.plot(data[:,0]*1000, data[:,1]) #1. column vs 2. column
plt.xlabel('Time [ms]');plt.ylabel('$U_1$ [V]');
plt.savefig('graph.jpg')
plt.show()

#Run it: save it as script.py and run "python script.py" or execute in a
```

Matlab

```
ShotNo=39187
baseURL='http://golem.fjfi.cvut.cz/shots/';
diagnPATH='/Diagnostics/BasicDiagnostics/U_Loop.csv';
%Create a path to data
dataURL=strcat(baseURL,int2str(ShotNo),diagnPATH);
% Write data from GOLEM server to a local file
urlwrite(dataURL,'LoopVoltage');
% Load data
data = load('LoopVoltage', '\t');
% Plot and save the graph
f = figure('visible', 'off');
hold on
plot(data(:,1)*1000, data(:,2), '.');
xlabel('Time [ms]')
ylabel('U_1 [V]')
hold off
print -djpeg plot.jpg
close(f)
exit;
```

Octave

```
ShotNo=39187
baseUrl='http://golem.fjfi.cvut.cz/shots/';
diagnPATH='/Diagnostics/BasicDiagnostics/U_Loop.csv';
%Create a path to data
dataURL=strcat(baseUrl,int2str(ShotNo),diagnPATH);
% Write data from GOLEM server to a local file
urlwrite(dataURL,'U_Loop.csv');
% Load data
data = load('U_Loop.csv', '\t');
% Plot and save the graph
plot(data(:,1)*1000, data(:,2), '.');
xlabel('time [ms]')
ylabel('U_{loop} [V]')
saveas(gcf, 'plot', 'jpg');
exit;
```

Gnuplot

```
identifier = 'U_Loop.csv' ;
ShotNo = '39187'
# Create a path to the data
DAS='Diagnostics/BasicDiagnostics/'
baseURL='http://golem.fjfi.cvut.cz/shots/'
DataURL= baseURL.ShotNo.'/'.DAS.identifier
set datafile separator ',';
set title "Uloop for #".ShotNo;
! wget -q @DataURL ;# Write data from GOLEM erver to a local file
# Plot the graph from a local file
set xrange [0:0.02];set xlabel 'Time [s]';set ylabel 'U_1 [V]'
set terminal jpeg; plot identifier u 1:2 w l t 'Uloop'
```

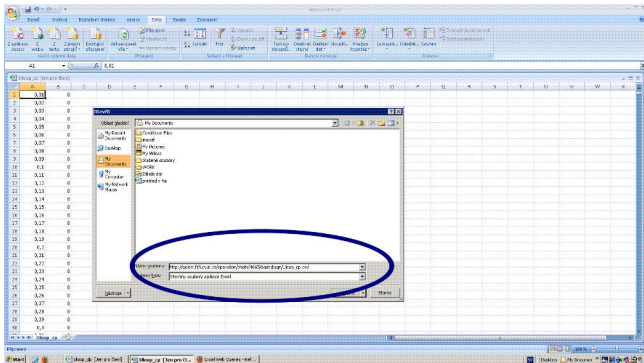
```
shot_no=39187;\
signal_id="Diagnostics/BasicDiagnostics/Results/U_loop.csv";\
gnuplot -p -e "set title \"Golem\";set datafile separator \"\",\"";\
set xlabel \"t [s]\";set ylabel \"U\";\
plot \"< \
wget -q -O - http://golem.fjfi.cvut.cz/shots/$shot_no/$signal_id\" \
w l t \"U\""
```


GNU Wget

GNU Wget is a free software package for retrieving files using HTTP, HTTPS and FTP, the most widely-used Internet protocols. It is a non-interactive commandline tool, so it may easily be called from scripts, cron jobs, terminals without X-Windows support, etc.

- Runs on most UNIX-like operating systems as well as Microsoft Windows.
- Homepage: <http://www.gnu.org/software/wget/>
- Basic usage:
 - To get U_l : `wget http://golem.fjfi.cvut.cz/utis/data/<#ShotNo>/loop_voltage`
 - To get whole shot: `wget -r -nH -cut-dirs=3 -no-parent -l2 -Pshot http://golem.fjfi.cvut.cz/shots/<#ShotNo>`

Excel



File→Open→

`http://golem.fjfi.cvut.cz/utils/data/<#ShotNo>/<identifier>`

Spreadsheets (Excel and others)

are not recommended, only tolerated.

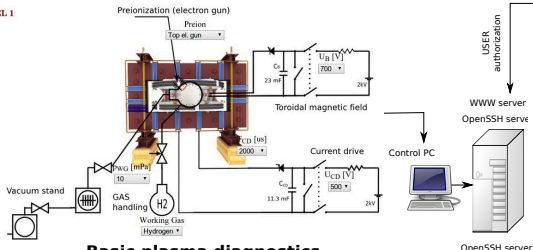
Table of Contents

- 1 Introduction
- 2 The Tokamak (GOLEM)
- 3 The Tokamak GOLEM (remote) operation
- 4 Conclusion**
- 5 Appendix

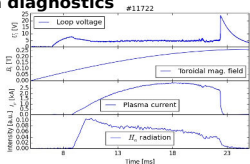
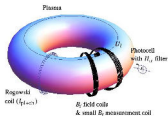
The global schematic overview of the GOLEM experiment

LEVEL 1

Tokamak technology setup



Basic plasma diagnostics



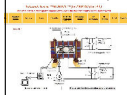
internet



**Virtual control room
(remote participation)**

WWW control interface

HTML & PHP scripts



SSH control interface

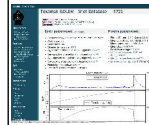
WINDOWS via putty



LINUX via ssh
or ssh+X tunnel
(advanced mode)

Data presentation

HTML (www pages)



Data handling

- *wget
- *gnuplot
- *idl
- *mathematica
- *matlab
- *etc...

WWW server
OpenSSH server

OpenSSH server

Control PC



Fee: postcard from the venue of remote measurements



Acknowledgement

Financial support highly appreciated:

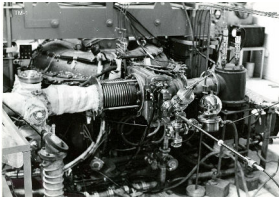
CTU RVO68407700, SGS 17/138/OHK4/2T/14, GAČR GA18-02482S, EU funds CZ.02.1.01/0.0/0.0/16_019/0000778 and CZ.02.2.69/0.0/0.0/16_027/0008465, IAEA F13019, FUSENET and EUROFUSION.

Students, teachers, technicians (random order):

Vladimír Fuchs, Ondřej Grover, Jindřich Kocman, Tomáš Markovič, Michal Odstrčil, Tomáš Odstrčil, Gergo Pokol, Igor Jex, Gabriel Vondrášek, František Žáček, Lukáš Matěna, Jan Stockel, Jan Mlynář, Jaroslav Krbec, Radan Salomonovič, Vladimír Linhart, Kateřina Jiráková, Ondřej Ficker, Pravesh Dhyani, Juan Ignacio Monge-Colepicolo, Jaroslav Čerovský, Bořek Leitl, Martin Himmel. Petr Švihra, Petr Mácha, Vojtěch Fišer, Filip Papoušek, Sergei Kulkov, Martin Imříšek.

Thank you for your attention

Tokamak TM1
@Kurchatov Institute near Moscow
~1960-1977



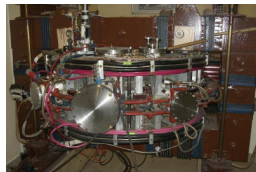
SCIENCE

Tokamak CASTOR
@Institute of Plasma Physics, Prague
1977-2007



SCIENCE
& education

Tokamak GOLEM
@Czech Technical University, Prague
2007-



EDUCATION
& science

... with the biggest
control room
in the world ..

Tokamak Golem **REMOTE**** for MASTER (Level 1)**
The smallest & oldest operational tokamak with the biggest control rooms in the world

Home	Wiki	Control Room	Queue	Live	Results	GOLEM Diagram	Chamber status	IP cameras	3D model	Chat	Feedback	Stop
------	------	--------------	-------	------	---------	---------------	----------------	------------	----------	------	----------	------

LEVEL 1

Preionization (electron gun)
Proton

Toroidal magnetic field

Current drive

Vacuum stand

GAS handling

Working Gas





Discharge comment

Place the discharge setup into the queue.

Table of Contents

- 1 Introduction
- 2 The Tokamak (GOLEM)
- 3 The Tokamak GOLEM (remote) operation
- 4 Conclusion
- 5 Appendix**

References I

-  Wikipedia contributors. Golem — Wikipedia, the free encyclopedia. <https://en.wikipedia.org/w/index.php?title=Golem>, 2020. [Online; accessed 29-March-2020].
-  V. Svoboda, B. Huang, J. Mlynar, G.I. Pokol, J. Stockel, and G. Vondrasek. Multi-mode Remote Participation on the Golem Tokamak. *Fusion Engineering and Design*, 86(6-8):1310–1314, 2011.
-  Brotankova, J. *Study of high temperature plasma in tokamak-like experimental devices*. PhD thesis, 2009.
-  Tokamak GOLEM contributors. Tokamak GOLEM at the Czech Technical University in Prague. <http://golem.fjfi.cvut.cz>, 2007. [Online; accessed October 31, 2023].

References II



J. Wesson. *Tokamaks*, volume 118 of *International Series of Monographs on Physics*. Oxford University Press Inc., New York, Third Edition, 2004.